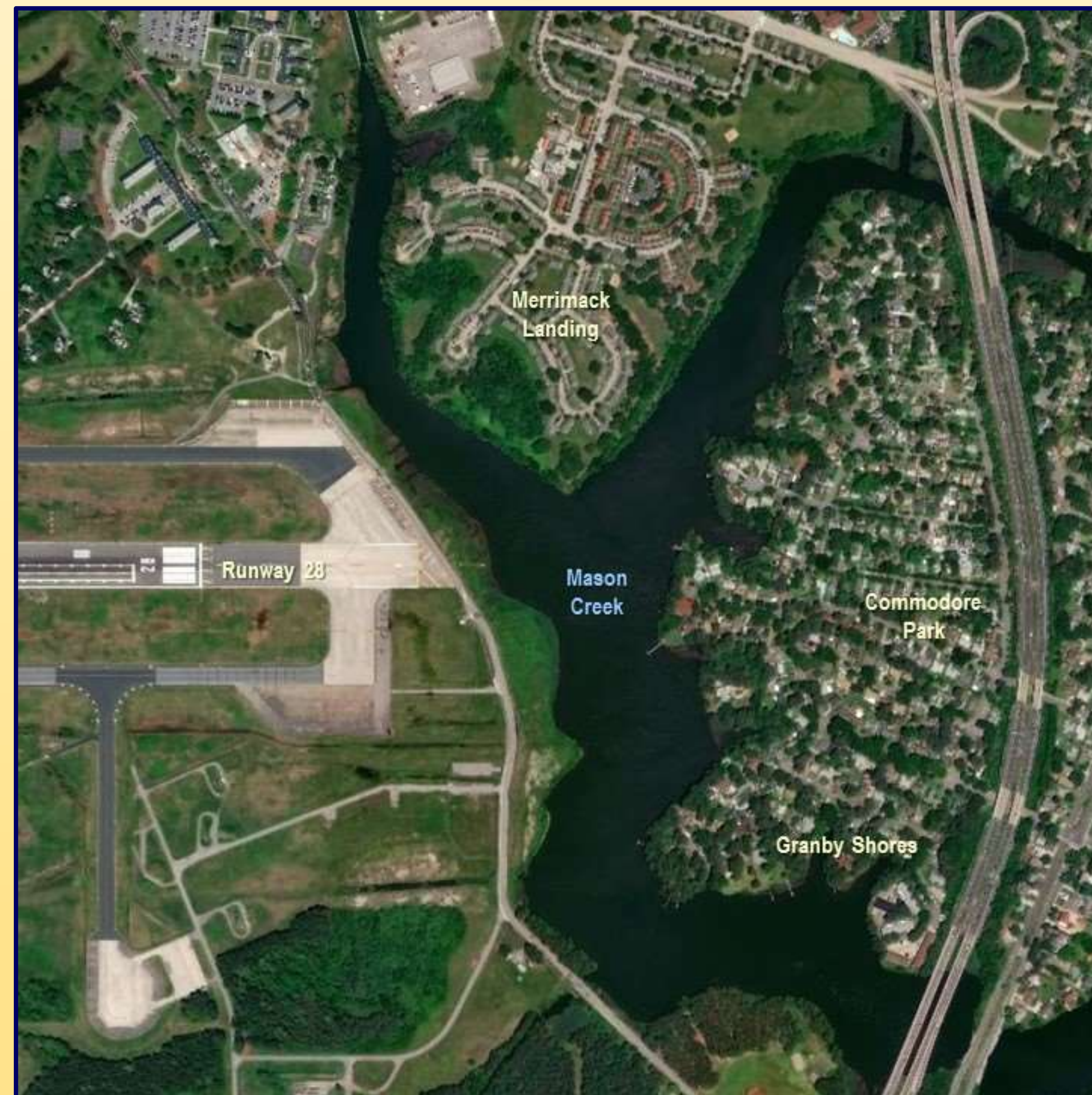




Welcome...

***To the Naval Station Norfolk
Chambers Field Open House Meeting***

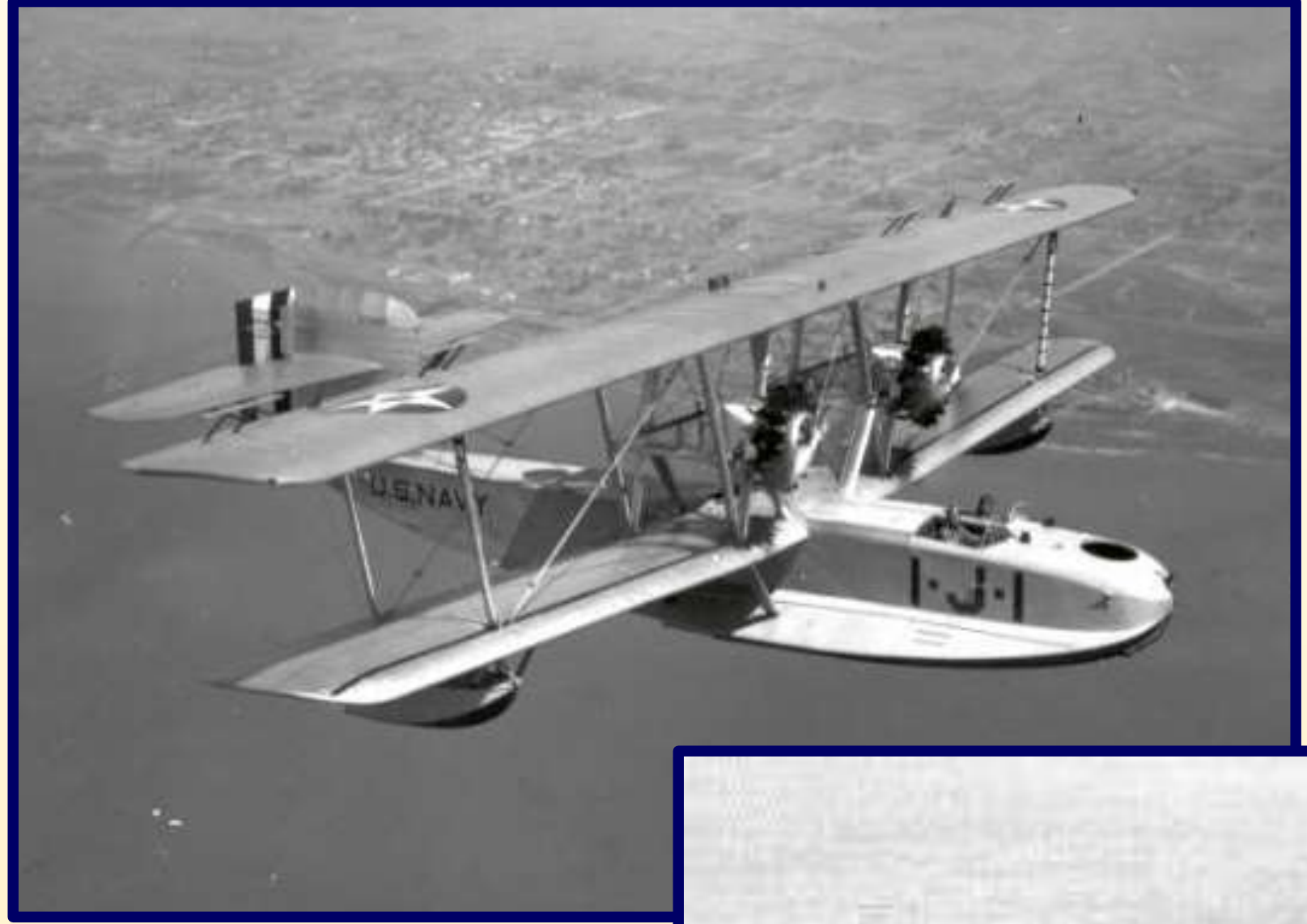


**November 8, 2018
Northside Middle School
4-7 pm**

NAVAL STATION NORFOLK - CHAMBERS FIELD

Established in 1917

- Conduct anti-submarine patrols
- Train aviators
- Run experiments



Today

- Home base of 18 Squadrons (helicopters, tilt-wing/Osprey, and airplanes)
- Location of Air Mobility Command (AMC) Air Terminal
 - Primary DoD hub for transporting large cargo by air, using both military and commercial contract flights
 - Primary terminal for transporting DoD personnel overseas

Home-based aircraft:



AMC aircraft (examples):



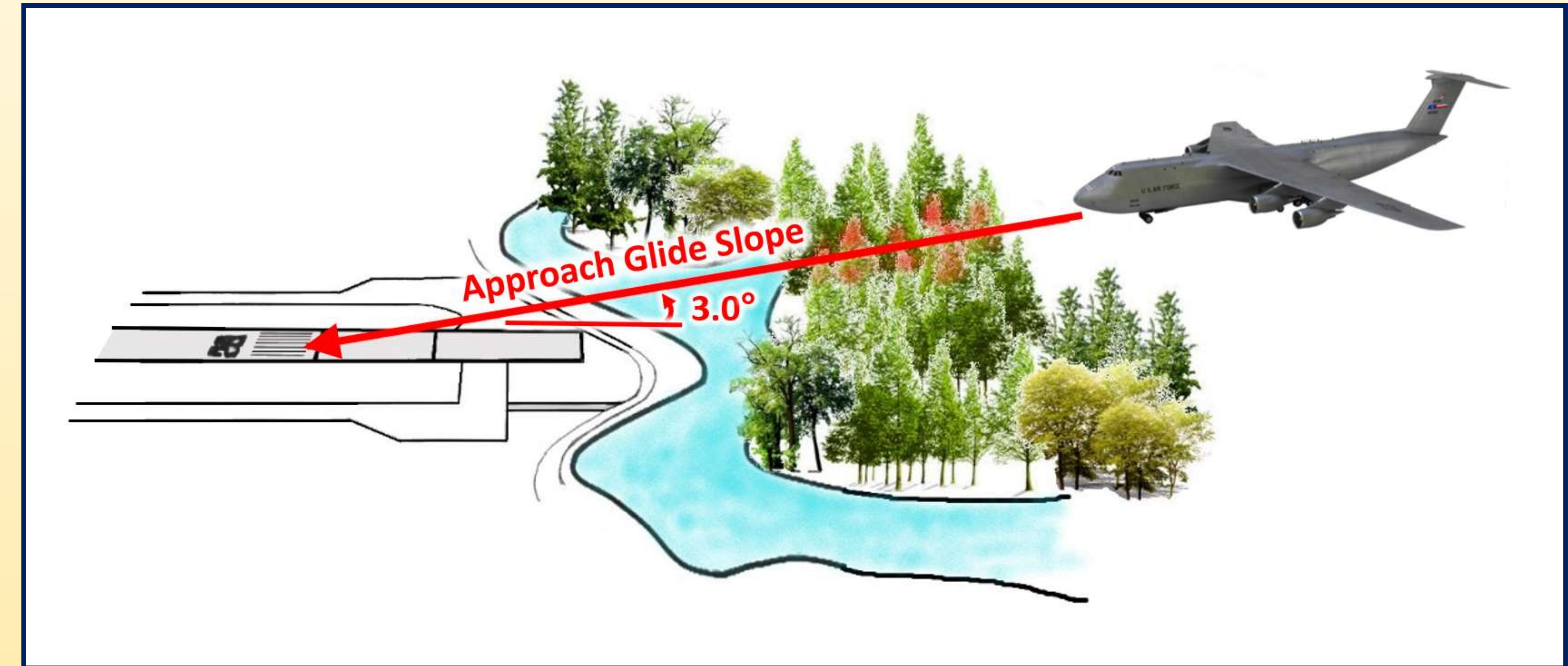
APPROACH GLIDE SLOPE

A **glide slope** is the angle an aircraft flies approaching an airfield.

Tall tree obstructions are a safety concern for approaching and departing aircraft.

Annual Safety inspections required:

- Inspect for airfield safety
- Identify obstacles that potentially penetrate the safe airspace.



Previous Navy actions to address glide-slope obstructions:

- On-base trees that were an obstruction were removed.
- Moved the landing point back as far as possible.
- Glide slope angle currently at maximum for cargo aircraft.



C5 Aircraft

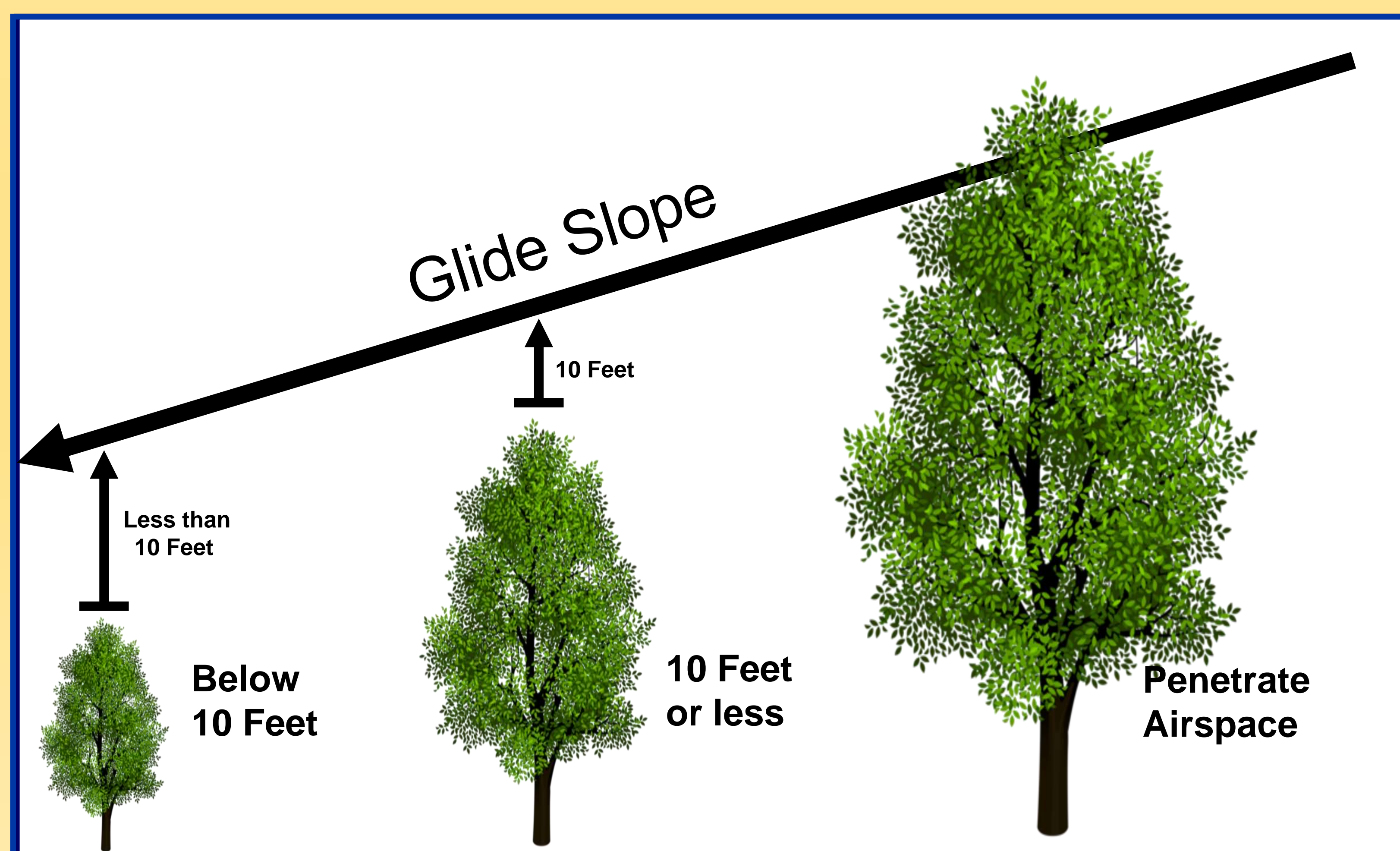


MD11 Aircraft

AERIAL SURVEY

Obstructions

- **Recent Safety Inspections** - noted that trees near the airfield could be a glide slope obstruction.
- **Aerial Survey** - identified the potential location of trees extending within 10 feet of the glide slope on Navy property and in the Merrimack Landing, Commodore Park, Granby Shores, and North Side neighborhoods.
- **Ground Survey** - is being conducted to verify tree heights, species and locations.



OBSTRUCTION MAP



Area between White Lines
Indicates Approach-
Departure Path



Runway
28

Chambers
Field

Oastes Creek

Mason Creek

N

Area between White Lines
Indicates Approach-
Departure Path

AIR INSTALLATION COMPATIBLE USE ZONES (AICUZ)

Norfolk Naval Station Chambers Field

AICUZ Program Goals:

- Protect the health, safety, and welfare of those living and working near a military airport while preserving its flying mission
- Identify safety and noise zones associated with aircraft operations
- Promote compatible land use within these zones

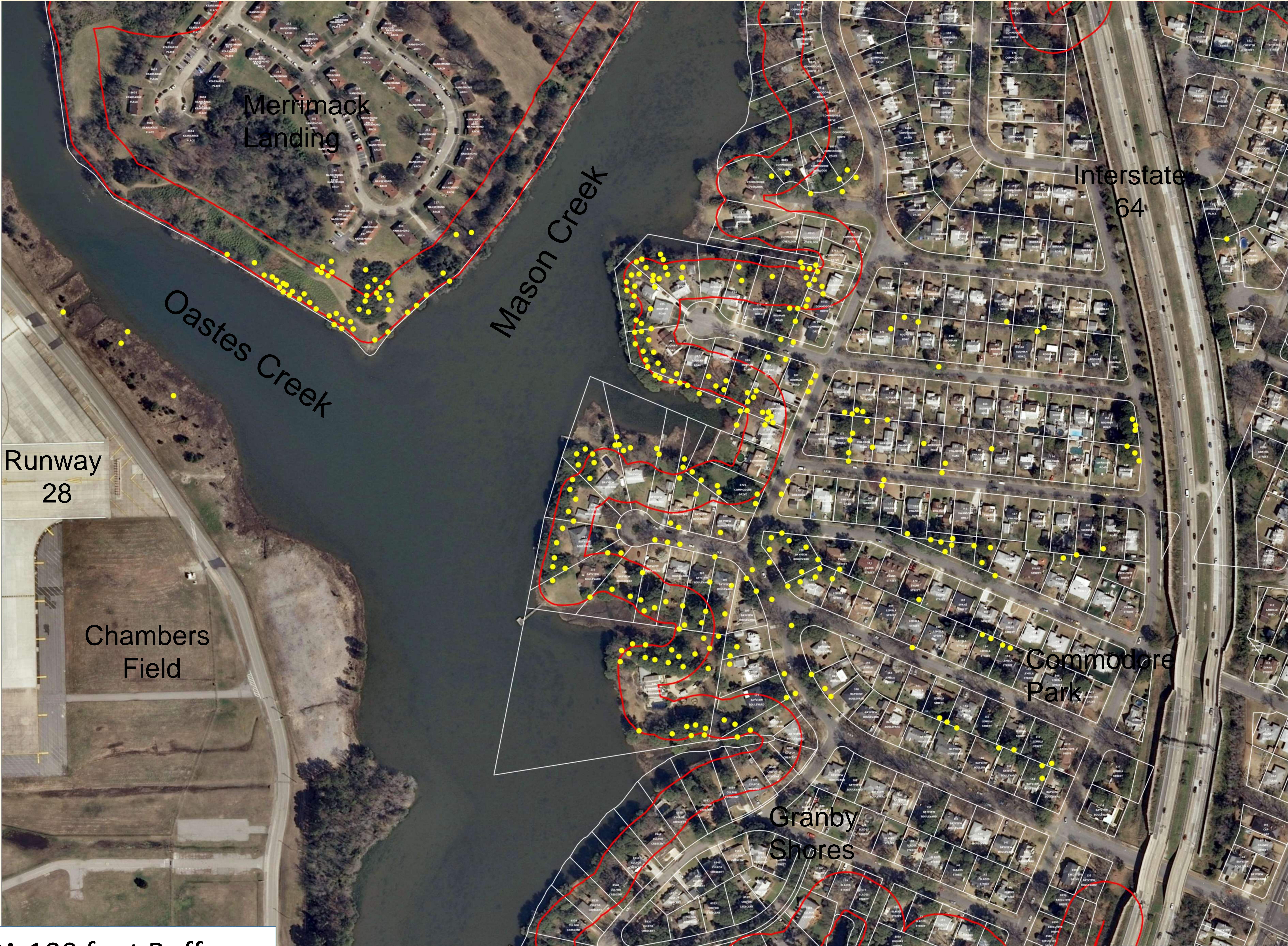


Clear Zone (CZ): Area closest to runway with greatest potential for an accident

Accident Potential Zone (APZ) I: Area beyond the CZ, still has a measurable potential for an accident

APZ II: Area beyond APZI. Lower, but still a measurable potential for an accident

CHESAPEAKE BAY PRESERVATION AREA



— CBPA 100 foot Buffer

TREE REMOVAL AND REPLACEMENT

- **Navy will work with homeowners to develop property specific landscape plans for trees identified for removal.**

- No cost to property owners
- Minimize impacts to homeowners



- **All new trees/shrubs must meet State and City requirements.**

- Replacements will be native species, small canopy trees or shrubs
- 50 % of all replacements must be trees
- Tree planting season is Halloween to Valentine's Day



Chesapeake Bay Preservation Area Benefits of Trees:

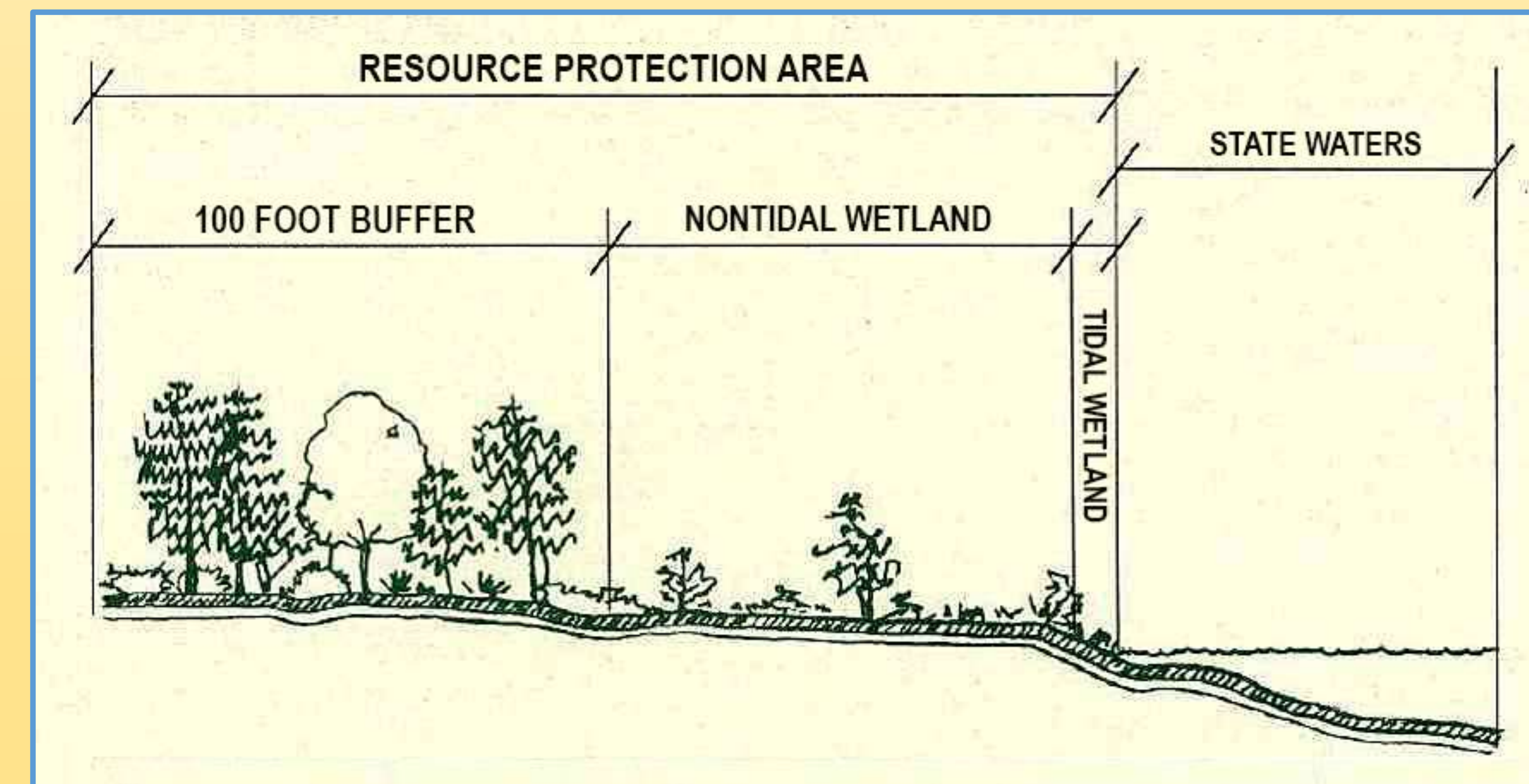
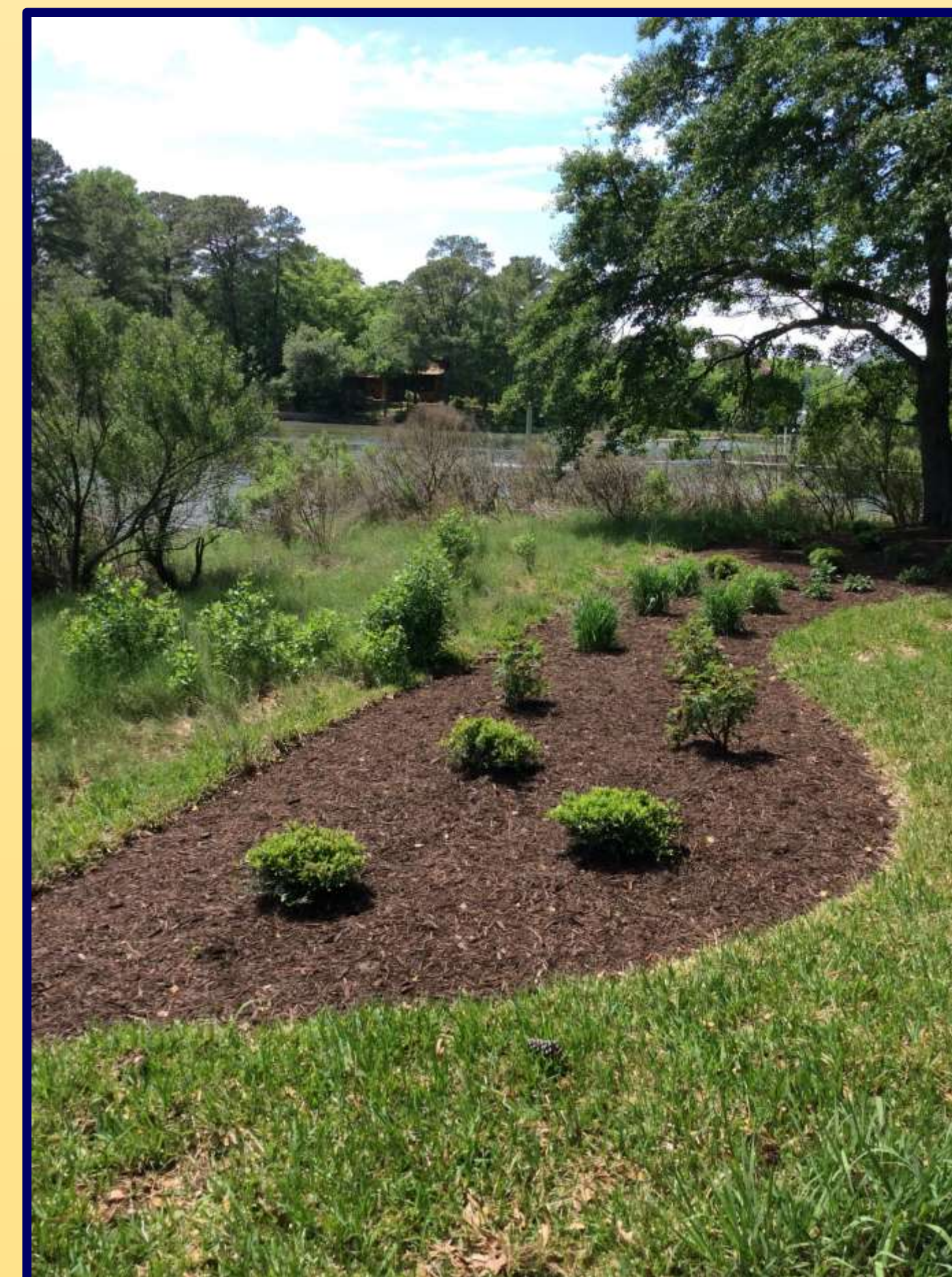
- **Clean Air**
- **Clean Water**
- **Erosion Control**
- **Stormwater Control**

- **Trees on City property or within the Chesapeake Bay Preservation Area**

- Replacement requirements are determined by the number of trees removed and their size

- **Trees on private property and outside the Chesapeake Bay Preservation Area**

- No specific requirements



The Navy will begin developing tree and shrub replacement plans as needed, when the assessment is complete in Spring 2019.

WE NEED YOUR HELP!

The Navy needs to verify the actual height, species and ownership of specific trees on private property that may be an obstruction.

How we do this:

- Use public right-of-way
- Private property access with homeowner's permission

Ground Survey will consist of:

- 3 people entering property (Navy representative and 2 surveyors)
- Approximately 60 minute timeframe
- Set up and use of survey equipment



For more information: https://www.cnmc.navy.mil/regions/cnrma/installations/ns_norfolk.html